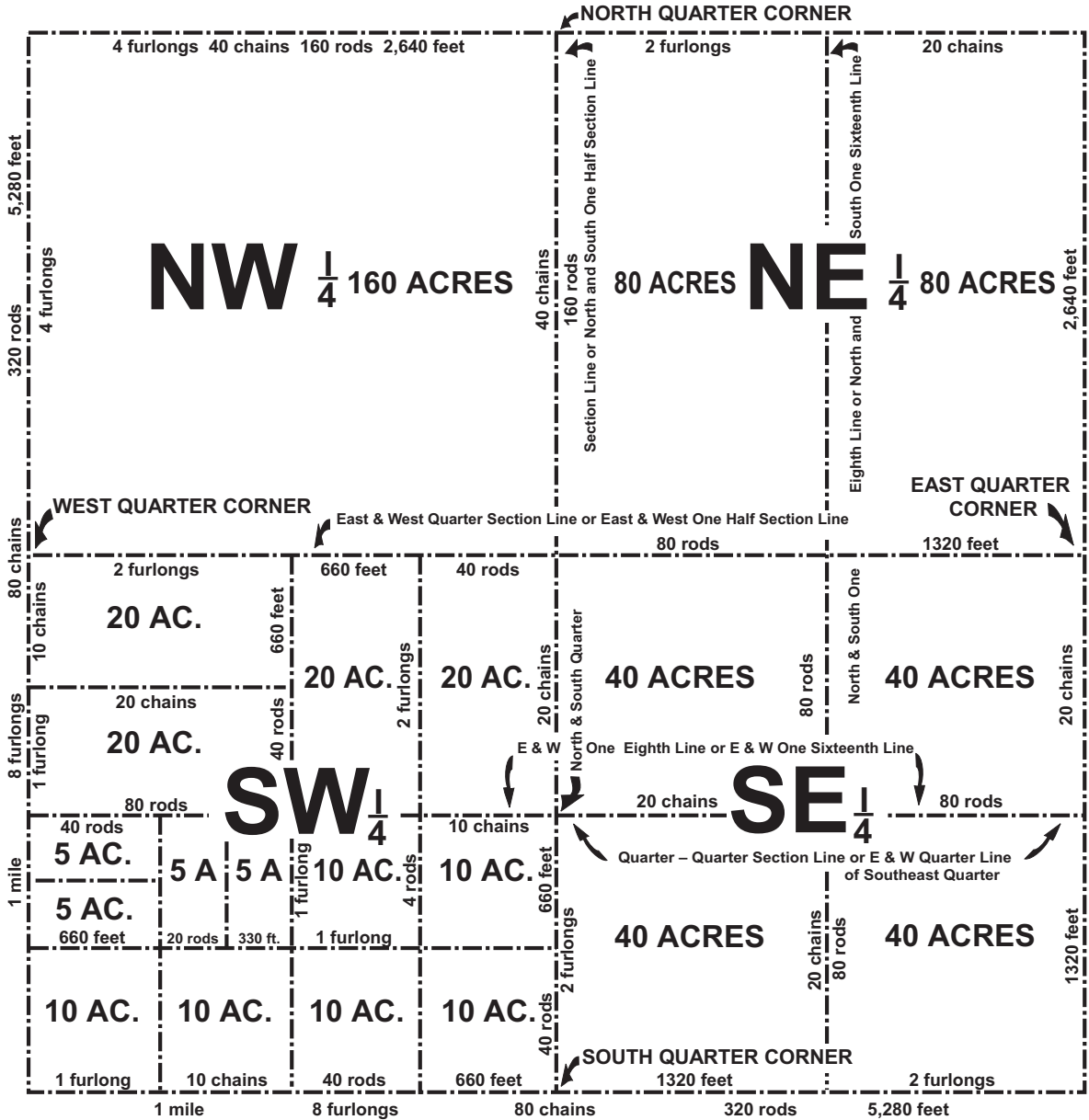


# SECTION OF LAND SHOWING ACREAGE AND DISTANCES

SECTION = One Square Mile = 640 Acres



1 link — 7.92 inches

1 rod — 16½ feet

1 chain — 4 rods or 66 feet or 100 links

1 furlong — 660 feet or 40 rods

1 mile — 8 furlongs or 320 rods or 80 chains or 5,280 feet

1 sq. rod — 272¼ sq. feet or 30¼ sq. yards

1 acre — 43,560 sq. feet or 160 sq. rods

1 acre is 132 feet x 330 feet (or any two numbers of feet whose product is 43,560)

1 acre is 8 rods x 20 rods (or any two numbers of rods whose product is 160)

1 section — 1 square mile or 640 acres